

Coronavirus (COVID-19) Update

COVID-19 Daily Situation Update, WHO Regional Office for Africa

Epidemiological Week No. 20 | 13 May 2020

KEY HIGHLIGHTS

- In the past 24 hours (00:00, 11 May 2020 to 00:00, 12 May 2020), a total of **2 200** new confirmed COVID-19 cases were reported from **24** countries. South Africa (698), Ghana (427), Algeria (176) and Zambia (174) reported large numbers of new cases.
- **Namibia, Seychelles, Eritrea** and **Mauritius** have reported **zero** new confirmed COVID-19 cases in the past **37, 35, 23** and **15** days, respectively. All the 16 confirmed COVID-19 cases in Namibia have recovered.
- A total of **29** new COVID-19 related deaths occurred in **eight** countries: Algeria (**8**), Nigeria (**8**), Democratic Republic of Congo (**6**), Kenya (**3**), Ethiopia (**1**), Mali (**1**), Niger (**1**) and Burkina Faso (**1**) in the past 24 hours.
- The cumulative number of confirmed COVID-19 cases in the WHO African Region is **47 952**, including 55 probable cases, with the West African region registering the highest caseload at **43%** (20 661).
- A total of **1 176** health workers from **30** countries have been infected, with South Africa having 28% (325) of all the cases. Among the 1 176 health workers, there have been 37 deaths reported from 12 countries.
- The cumulative total of COVID-19 related deaths is **1 488**, reported from **37** countries, giving an overall case fatality ratio of **3.1%** in the region. Algeria has the highest number of mortalities, with **35%** (515/1 488) of all reported deaths.
- As of 12 May 2020, a total of **16 719** case-patients from 45 countries have recovered from the disease.
- **Lesotho** has remained the only country with no reported confirmed COVID-19 cases.
- A cumulative total of **69 126** confirmed COVID-19 cases with **2 386** deaths have been reported in the African continent.

EPIDEMIOLOGICAL UPDATE

WHO African Regional situation (as of 12 May 2020, 00:00 hours Brazzaville)

- The majority of the WHO African Region has been affected by the current global COVID-19 pandemic, with **98%** (46/47) of its Member States reporting confirmed cases. The COVID-19 caseload and mortality in the region has continued to rise exponentially, especially in the past ten days, as shown in **Annexes 1, 2 and 3**.
- Currently, there are increasing incidences of importation of cases within affected countries in the region through the land border crossings.
- Lesotho has remained the only country in the region that has not reported any confirmed COVID-19 cases.

Confirmed cases

- In the last 24 hours, a total of 2 200 new confirmed COVID-19 cases were reported from 24 countries (as shown in Annex 4) compared to 1 653 cases reported from 25 countries the previous day. South Africa reported the highest number of new cases at 698 (32% increase), followed by Ghana with 427 (19% increase), Algeria 176 (8.0% increase), Zambia 174 (7.9% increase), Nigeria 146 (6.6% increase), Cote d'Ivoire 127 (5.8% increase), and Senegal 109 (50% increase).
- A total of 29 new COVID-19 related deaths occurred in eight countries: Algeria (8), Nigeria (8), Democratic Republic of Congo (6), Kenya (3), Ethiopia (1), Mali (1), Niger (1) and Burkina Faso (1) in the past 24 hours.
- As of 12 May 2020, a cumulative total of 47 952 confirmed COVID-19 cases have been reported across 46 (98%) of 47 countries in the WHO African Region. Among the 47 952 cases, are 55 probable cases recorded in Sao Tome and Principe. Nine countries have registered more than 1 000 confirmed COVID-19 cases including South Africa (11 350), Algeria (6 067), Ghana (5 127),

Nigeria (4 787), Cameroon (2 689), Guinea (2 298), Senegal (1 995) Côte d'Ivoire (1 857) and Democratic Republic of the Congo (1 169) (**Annex 4**).

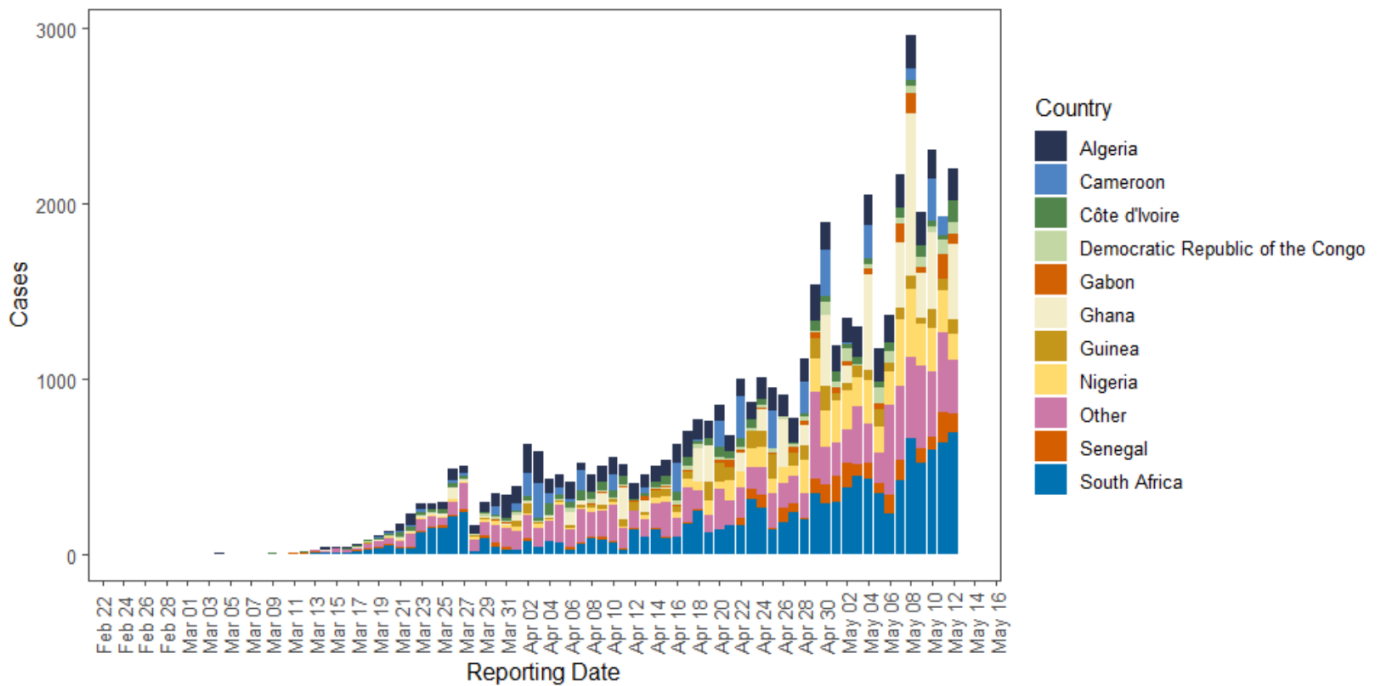
- The West African region has registered the highest proportion of confirmed COVID-19 cases (43%, 20 611), followed by the Southern region at (24%, 11 574).
- A total of 16 719 (35%) case-patients from 45 countries have recovered to date.
- As of 12 May 2020, a total of 1 176 health workers have been infected in 30 countries: South Africa (325), Niger (167), Côte d'Ivoire (85), Democratic Republic of the Congo (63), Ghana (63), Senegal (59), Gabon (57), Chad (44), Guinea-Bissau (43), Liberia (42), Cameroon (40), Sao Tome and Principe (32), Mauritius (30), Sierra Leone (29), Equatorial Guinea (26), Zambia (15), Congo (12), Togo (12), Eswatini (8), Madagascar (5), Malawi (5), Uganda (3), Benin (2), Kenya (2), Namibia (2), Botswana (1), Burundi (1), Central African Republic (1), United Republic of Tanzania (1) and Zimbabwe (1). Among the 1 176 health workers, there are 37 deaths reported from 12 countries: Democratic Republic of the Congo (6), South Africa (6), Cameroon (5), Liberia (5), Niger (4), Chad (3), Gabon (2), Sao Tome and Principe (2), Equatorial Guinea (1), Mauritius (1), Sierra Leone (1) and United Republic of Tanzania (1).
- A total of 1 488 deaths has occurred in 37 countries, giving an overall case fatality ratio of 3.1% in the region. Algeria still contributes the highest proportion, 35% (515) of the total reported deaths, followed by South Africa with 14% (206), Nigeria 11% (158), Cameroon 8.4% (125) and Burkina Faso 3.4% (51).
- According to available data on age and gender distribution ($n=4\ 805$), males (62%) in the 31-39 and 40-49 age groups are more affected than females (38%) across the same age groups in the African region (**Annex 5**).
- Namibia, Seychelles, Eritrea and Mauritius have reported zero new confirmed COVID-19 cases in the past 37, 35, 23 and 15 days, respectively. All the 16 confirmed COVID-19 cases in Namibia have recovered. The work to appraise critical response functions in these countries is ongoing to ensure that pockets of transmission are not missed.
- Currently, the number of countries experiencing widespread community transmission is increasing. The region has also observed increased incidences of importation of cases between affected countries in the region.
- In the rest of the African continent, a total of 21 174 confirmed COVID-19 cases have been reported from seven countries in the WHO EMRO Region: Egypt (9 746), Morocco (6 380), Sudan (1 526), Djibouti (1 256), Somalia (1 170), Tunisia (1 032) and Libya (64). Additionally, a total of 898 deaths has been recorded from Egypt (533), Morocco (188), Sudan (74), Somalia (52), Tunisia (45), Libya (3) and Djibouti (3) (**Annex 6**).
- A cumulative total of 69 126 confirmed COVID-19 cases, 2 386 deaths (case fatality ratio 3.5%) with 23 749 cases that have recovered have been reported in the African continent (**Annex 6**).

Global situation (as of 12 May 2020, 20:00 hours Geneva)

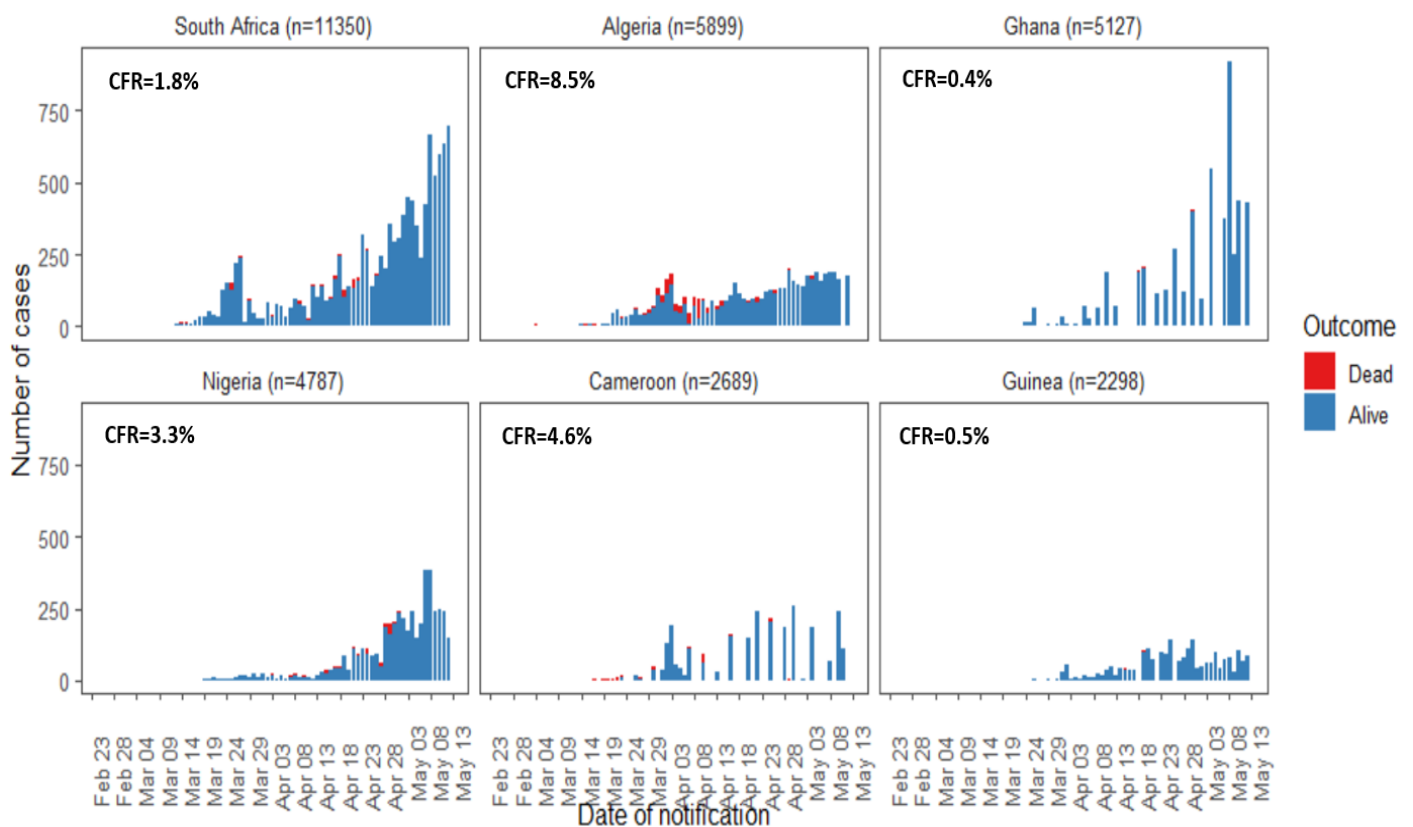
- A total of **82 591** new confirmed COVID-19 cases with **4 261** deaths were reported globally on 12 May 2020.
- Globally, the cumulative number of reported confirmed cases is **4 088 848**, with **283 153** deaths.
- WHO Operations Support and Logistics, in collaboration with a technical network of universities, architects, biomedical engineers and other health experts, is working to support the establishment of COVID-19 treatment centres, self-quarantine and community facilities at the request of countries seeking technical guidance in setting up such facilities.
- WHO also published new guidance on Contact Tracing in the Context of COVID-19. When systematically applied, the guidance will help break the chains of transmission of COVID-19 and other infectious diseases.

ANNEXES

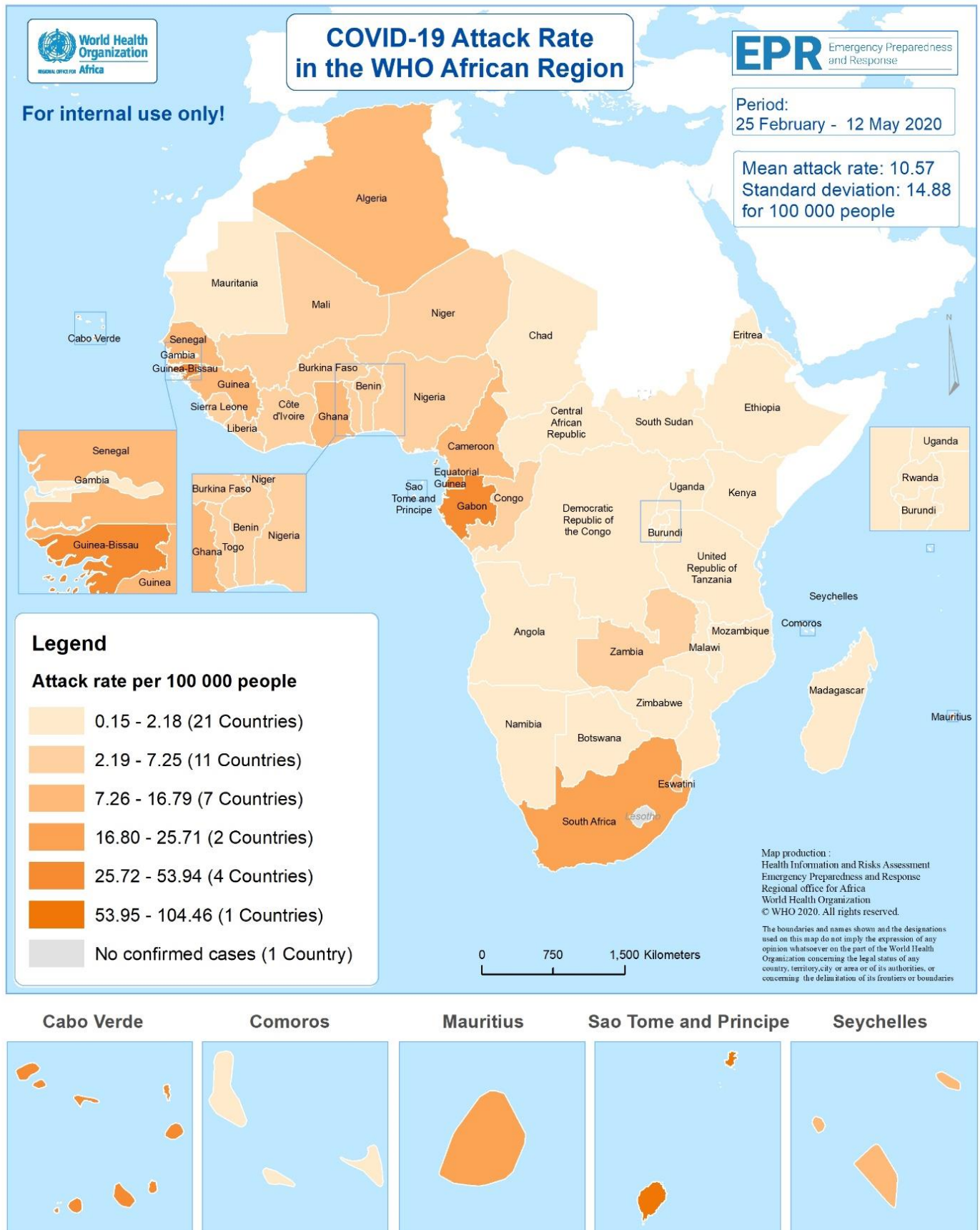
Annex 1: An epicurve of confirmed cases of COVID-19 in the WHO African Region, 25 February – 12 May 2020 (n=47 952)



Annex 2: Epicurves showing distribution of confirmed cases and deaths with case fatality ratios of COVID-19 in the top most reporting countries: South Africa, Algeria, Ghana, Nigeria, Cameroon and Guinea, 25 February – 12 May 2020 (n=47 952)



Annex 3: Map showing distribution of COVID-19 attack rate in the African region, 25 February – 12 May 2020 (n=47 952)

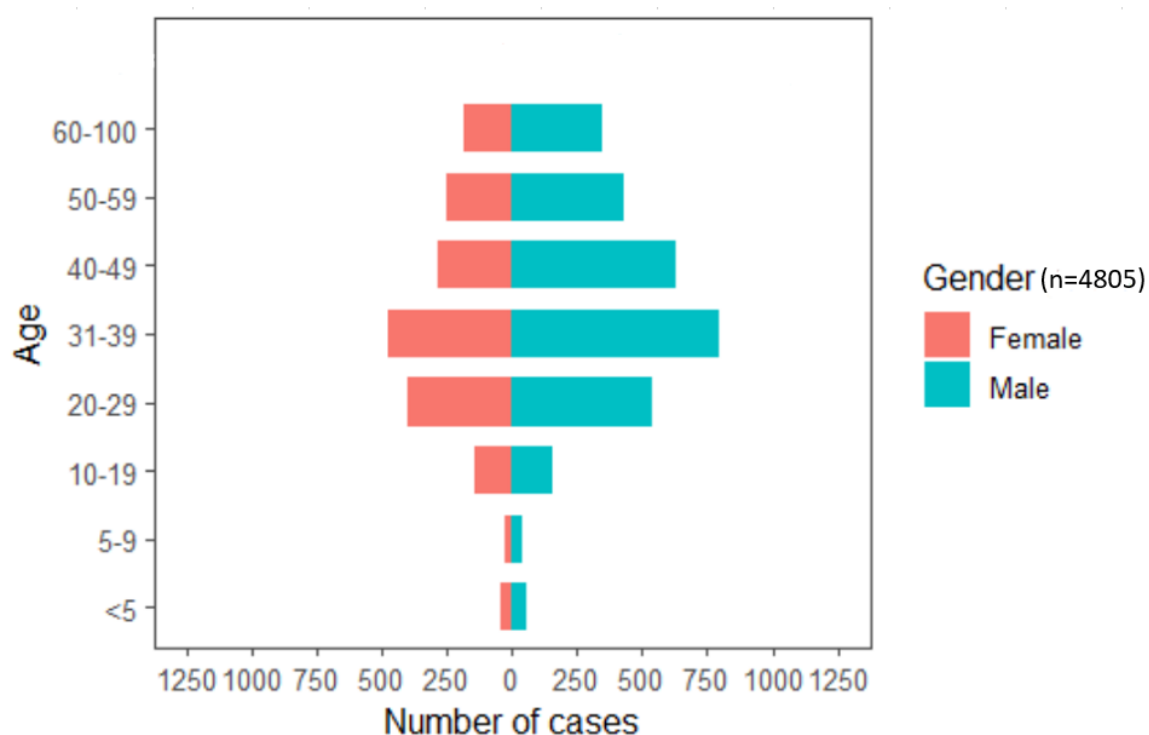


Annex 4: Countries with reported laboratory-confirmed COVID-19 cases and deaths: Data as of 12 May 2020

Country	Total Cases	New Alive	Total Deaths	New Deaths	Probable Total	Case fatality ratio (%)	Days since last reported case
South Africa	11 350	698	206			1.8	1
Algeria	6 067	176	515	8		8.5	1
Ghana	5 127	427	22			0.4	1
Nigeria	4 787	146	158	8		3.3	1
Cameroon	2 689		125			4.6	2
Guinea	2 298	85	11			0.5	1
Senegal	1 995	109	19			1.0	1
Côte d'Ivoire	1 857	127	21			1.1	1
Democratic Republic of the Congo	1 169	67	50	6		4.3	1
Gabon	863	61	9			1.0	1
Niger	854	22	47	1		5.5	1
Guinea-Bissau	820		3			0.4	2
Burkina Faso	766	6	51	1		6.7	1
Mali	730	18	40	1		5.5	1
Kenya	715	15	36	3		5.0	1
Equatorial Guinea	522		6			1.1	4
United Republic of Tanzania	509		21			4.1	4
Zambia	441	174	7			1.6	1
Chad	357		40			11	2
Sierra Leone	338		20	1		5.9	2
Congo	333		11			3.3	2
Mauritius	332		10			3.0	15
Benin	327	8	2			0.6	1
Rwanda	286					0.0	2
Cabo Verde	270	10	2			0.7	1
Ethiopia	261	11	5			1.9	1
Sao Tome and Principe	220		4		55	1.8	2
Liberia	212		20			9.4	2
Togo	199	18	11			5.5	1
Madagascar	192	6				0.0	1
Eswatini	184	9	2			1.1	1
Central African Republic	179					0.0	2
South Sudan	174					0.0	2
Uganda	126	4				0.0	1
Mozambique	104	1				0.0	1
Malawi	58	1	3			5.2	1
Angola	45		2			4.4	2
Eritrea	39					0.0	23
Zimbabwe	37		4			11	2
Burundi	27		1			3.7	3
Botswana	24		1			4.2	2
Gambia	23	1	1			4.3	1
Namibia	16					0.0	37
Comoros	11		1			9.1	2
Seychelles	11					0.0	35
Mauritania	8		1			13	12
Total (n=46)	47 952	2 200	1 488	29	55		

NOTE: The WHO AFRO COVID-19 Daily Update presents official data communicated by the national authorities in Member States. The data has been captured up to 23:59 hours of the previous day. Data/information received after 00:00 hours will be reflected in the subsequent update.

Annex 5: The distribution of confirmed COVID-19 cases by gender and age group: Data as of 25 February – 12 May 2020 (n= 4 805)



Annex 6: The cumulative number of confirmed COVID-19 cases and deaths reported in the African continent (AFRO and EMRO Regions), 25 February – 12 May 2020

Country	Cumulative cases	Cumulative deaths	Cumulative recovered	Case fatality ratio (%)
Egypt	9 746	533	2 172	5.5
Morocco	6 380	188	2 930	2.9
Sudan	1 526	74	161	4.8
Djibouti	1 256	3	886	0.2
Somalia	1 170	52	126	4.4
Tunisia	1 032	45	727	4.4
Libya	64	3	28	4.7
Total (n=7)	21 174	898	7 030	4.2
Situation in the African Continent				
African Region	47 952	1 488	16 719	3.1
Eastern Mediterranean Region	21 174	898	7 030	4.2
Overall Total (n=52)	69 126	2 386	23 749	3.5

© WHO Regional Office for Africa

This is not an official publication of the World Health Organization.

Correspondence on this publication may be directed to:

Dr Benido Impouma

Programme Area Manager, Health Information & Risk Assessment

WHO Health Emergencies Programme

WHO Regional Office for Africa

P O Box. 06 Cité du Djoué, Brazzaville, Congo

Email: afrooutbreak@who.int

Requests for permission to reproduce or translate this publication – whether for sale or for non-commercial distribution – should be sent to the same address.

The designations employed and the presentation of the material in this publication do not imply the expression of any opinion whatsoever on the part of the World Health Organization concerning the legal status of any country, territory, city or area or of its authorities, or concerning the delimitation of its frontiers or boundaries. Dotted lines on maps represent approximate borderlines for which there may not yet be full agreement.

All reasonable precautions have been taken by the World Health Organization to verify the information contained in this publication. However, the published material is being distributed without warranty of any kind, either express or implied. The responsibility for the interpretation and use of the material lies with the reader. In no event shall the World Health Organization or its Regional Office for Africa be liable for damages arising from its use.